

MAY 1995

HAMMOCK CREEK PLAT NO. 2

SHEET 3 of 5

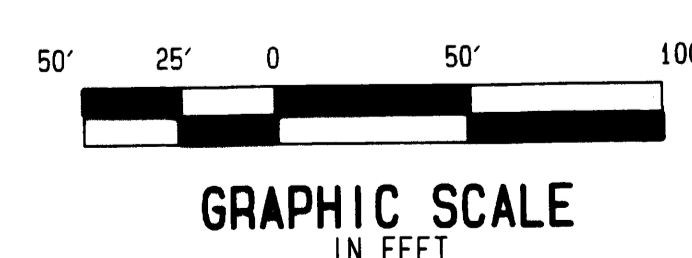
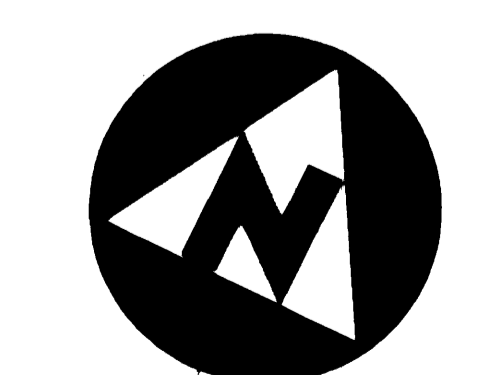
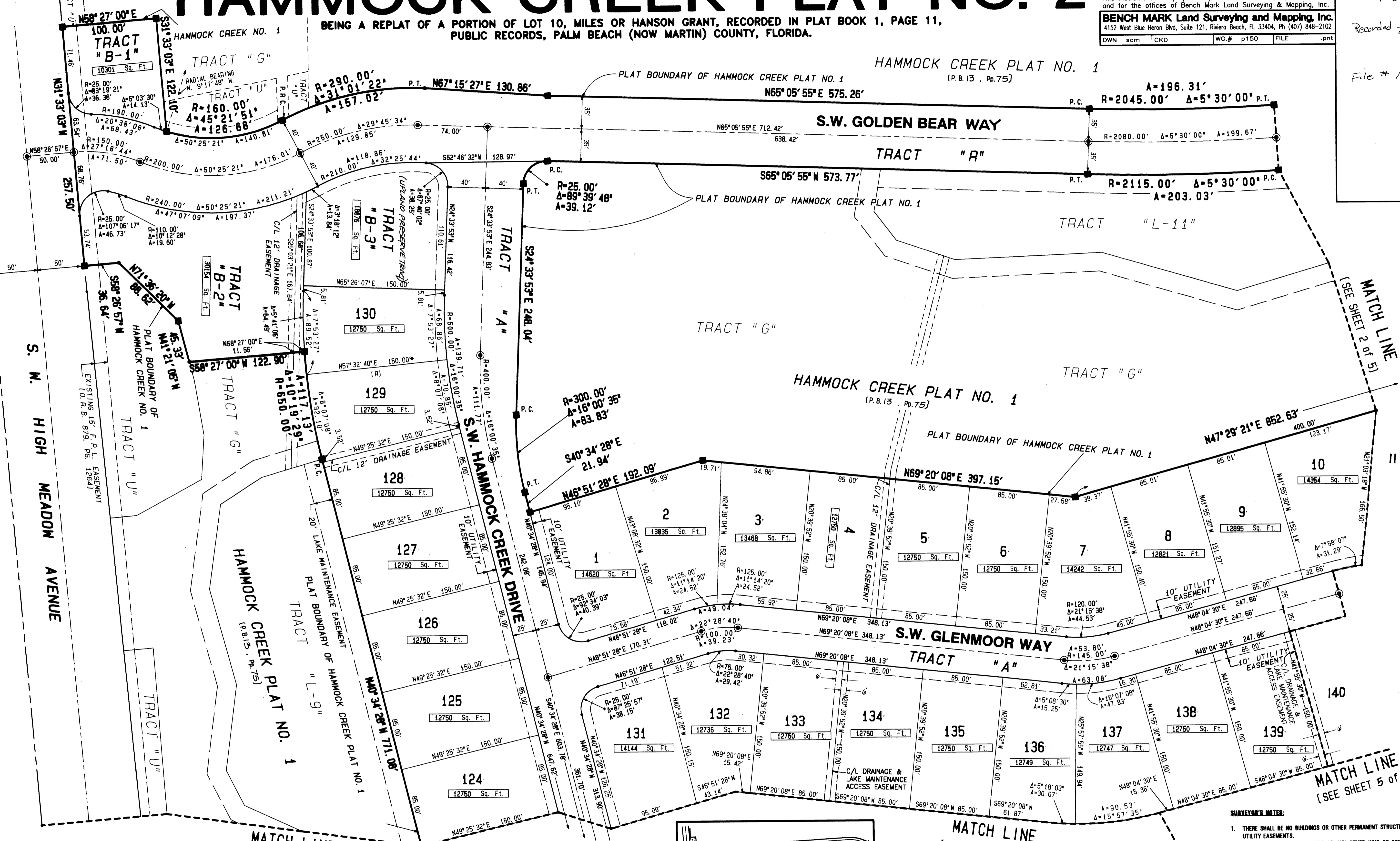
BEING A REPLAT OF A PORTION OF LOT 10, MILES OR HANSON GRANT, RECORDED IN PLAT BOOK 1, PAGE 11, PUBLIC RECORDS, PALM BEACH (NOW MARTIN) COUNTY, FLORIDA.

This instrument was prepared by Wm. R. Van Campen, R.L.S., in and for the offices of Bench Mark Land Surveying & Mapping, Inc.
BENCH MARK Land Surveying and Mapping, Inc.
4152 West Blue Heron Blvd, Suite 121, Riviera Beach, FL 33404, Ph (407) 848-2102
DWN scm CKD WO.# p150 FILE .ent

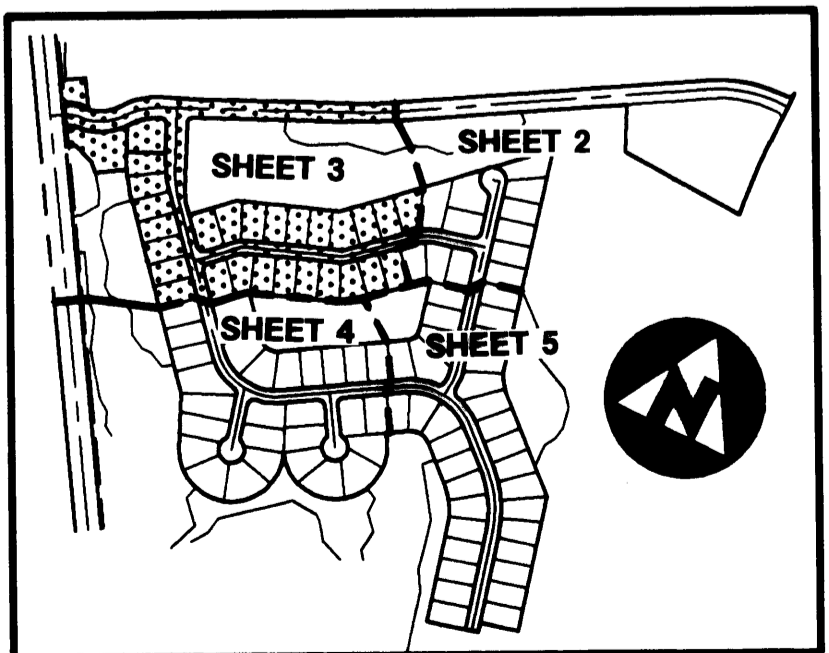
Plat Book 13
page 86

Recorded 7-22-95

File # 1128471



- LEGEND:**
- INDICATES SET #2424 PERMANENT REFERENCE MONUMENT (P.R.M.)
 - INDICATES FOUND #2424 PERMANENT REFERENCE MONUMENT (P.R.M.)
 - INDICATES SET #2424 PERMANENT CONTROL POINT (P.C.P.)
 - INDICATES CENTERLINE
 - INDICATES DRAINAGE EASEMENT
 - INDICATES FLORIDA POWER AND LIGHT
 - INDICATES LAKE TRACT
 - INDICATES LAKE MAINTENANCE EASEMENT
 - INDICATES OFFICIAL RECORD BOOK
 - P.C. INDICATES POINT OF CURVATURE
 - P.C.P. INDICATES POINT OF COMPOUND CURVATURE
 - P.R.C. INDICATES POINT OF REVERSE CURVATURE
 - P.T. INDICATES POINT OF TANGENCY
 - (R) INDICATES RADIAL LINE
 - SQ. FT. INDICATES SQUARE FEET
 - U.E. INDICATES UTILITY EASEMENT



KEY MAP (NOT TO SCALE)

- SURVEYOR'S NOTES:**
1. THERE SHALL BE NO BUILDINGS OR OTHER PERMANENT STRUCTURES OR TREES PLACED ON UTILITY EASEMENTS.
 2. THERE SHALL BE NO BUILDINGS OR ANY OTHER KIND OF CONSTRUCTION OR TREES OR SHRUBS PLACED ON DRAINAGE EASEMENTS.
 3. THERE MAY BE ADDITIONAL RESTRICTIONS THAT ARE NOT RECORDED ON THIS PLAT, THAT MAY BE FOUND IN THE PUBLIC RECORDS OF MARTIN COUNTY, FLORIDA.
 4. BEARINGS SHOWN OR STATED HEREON ARE BASED ON, OR ARE RELATIVE TO, THE BEARING BASE SHOWN ON HAMMOCK CREEK PLAT NO. 1 AS RECORDED IN PLAT BOOK _____, PAGE _____, MARTIN COUNTY, FLORIDA.
 5. IN THOSE INSTANCES WHERE UTILITY/DRAINAGE STRUCTURES ARE CONSTRUCTED IN CONFLICT WITH THE PLATTED PERMANENT CONTROL POINTS (P.C.P.) POSITION, STRADDLERS MONUMENTED AS PERMANENT CONTROL POINTS WILL BE SET TO REFERENCE THE PLATTED P.C.P. POSITION.